

CAPITALLIFE MARKET RESEARCH PVT LTD



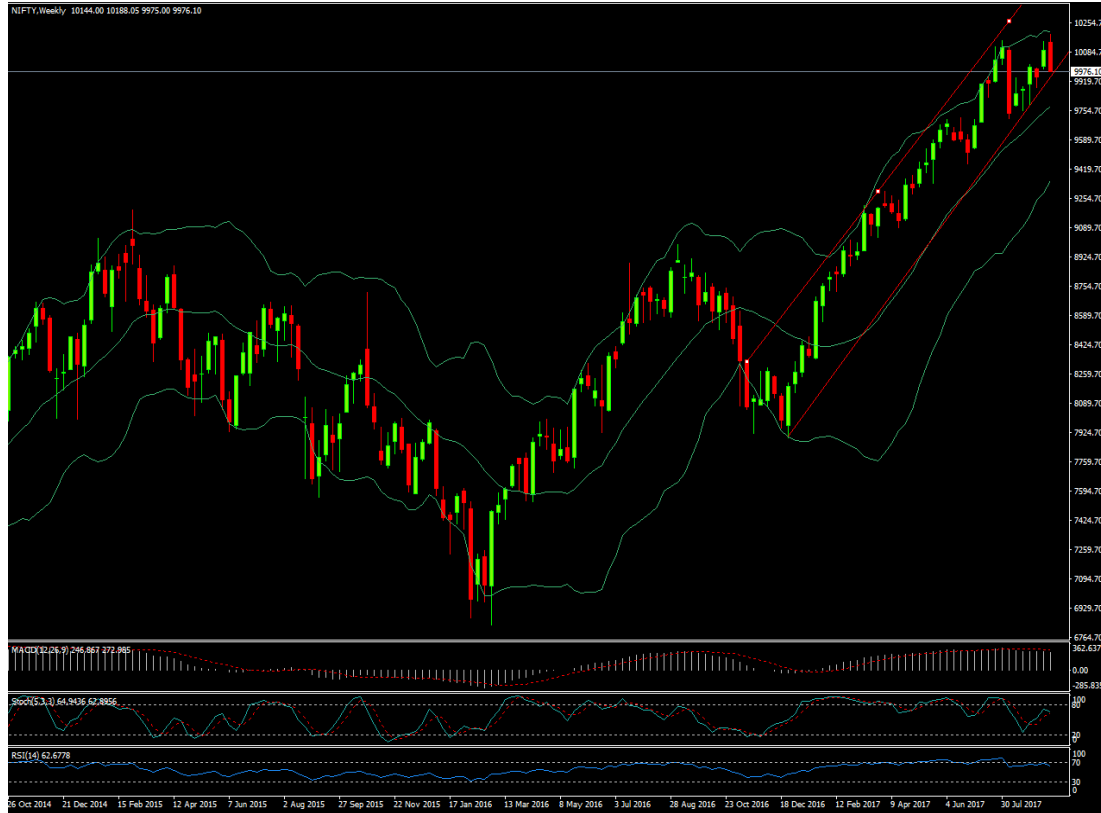
(WEEKLY EQUITY REPORT)

(25/09/2017 TO 29/09/2017)

RESEARCH BY - JEEVAN GUPTA (RESEARCH HEAD)

SPARSH VARANDANI (RESEACH ANALYST)

NIFTY WEEKLY OVERVIEW

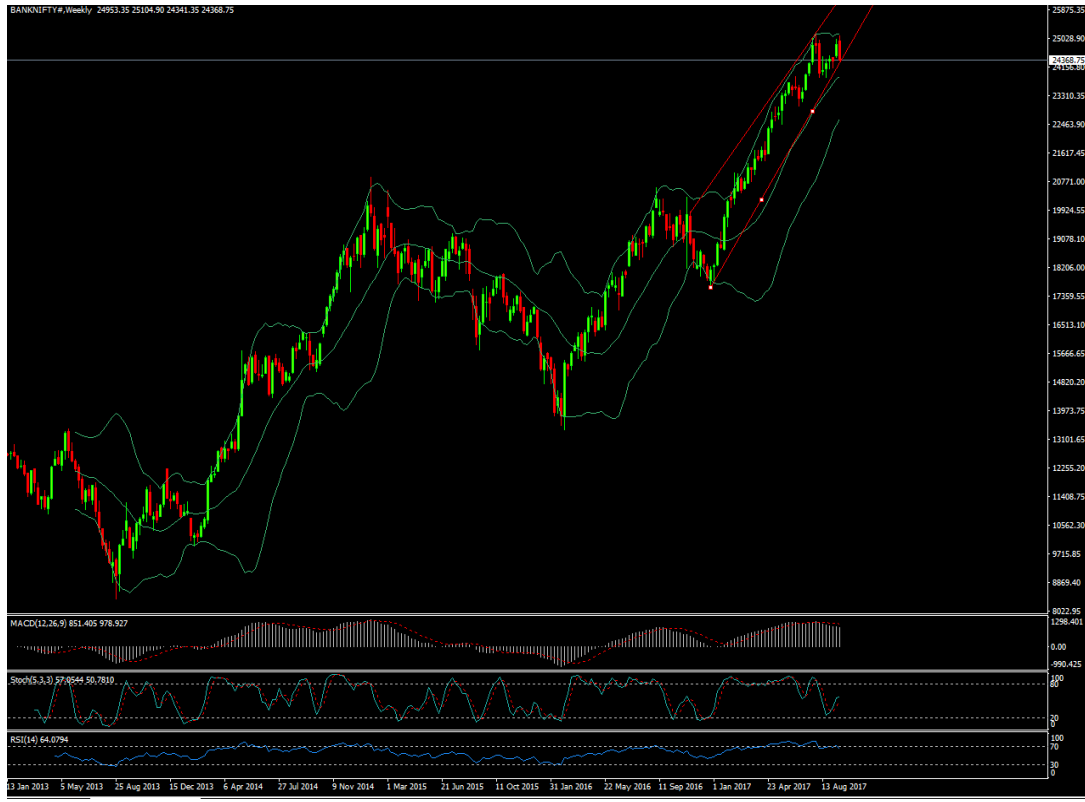


***NIFTY JULY TREND B/W 10200 - 9700 THIS WEEK.**

*** MAJOR SUPPORT LEVEL IS 9700 IF IT'S BREAK NIFTY WILL LIKELY GOES NEGATIVE.**

***MAJOR RESISTANCE LEVEL IS 10200 IF IT'S BREAK NIFTY LIKELY TO GOES POSITIVE.**

BANKNIFTY WEEKLY OVERVIEW



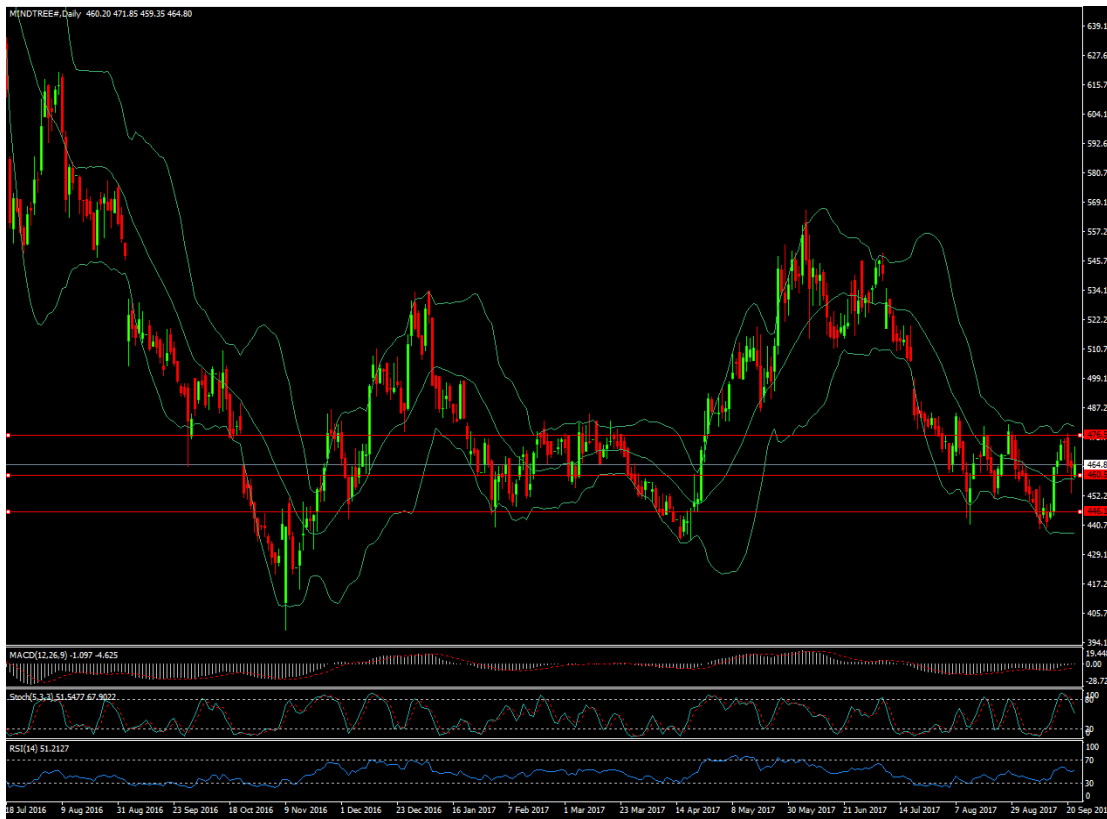
***BANK NIFTY TREND B/W 24000 - 25000 THIS WEEK.**

***MAJOR SUPPORT LEVEL IS 24000 IF IT'S BREAKNIFTY WILL LIKELY GOES NEGATIVE.**

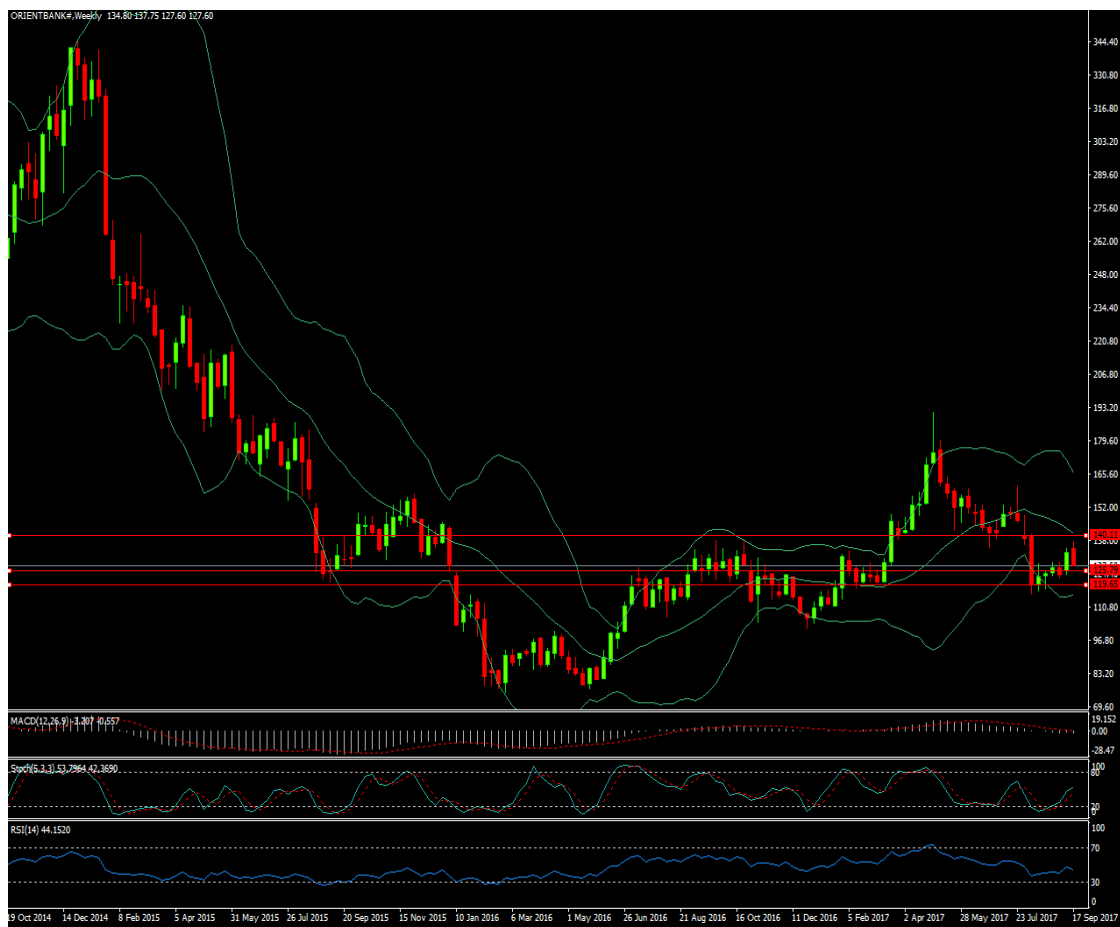
*** MAJOR RESISTANCE LEVEL IS 25000 IF IT'S BREAK BANKNIFTY WILL LIKELY GOES POSITIVE.**

STOCK PICK OF WEEK

***BUY MINDTREE (SPOT) ABOVE 460 (TARGET- 476) (SL- 446)**



- **BUY ORIENTAL BANK (SPOT) 125 – 137 (TARGET- 140) (SL – 119)**



All sales recommendations and tips offered by capital life research are for the information of our investors only and are strictly not individual recommendations or offers to buy or sell securities. The information we offer are obtained from reliable sources, but is not guaranteed for completeness or accuracy. All users shall be responsible for the risks of their investment activities and in no event does capital life research, its owners, employees or investors be liable for monetary damages or losses that results from the actions taken after reading those reports, analysis and reviews published at www.capitalliferesearch.com. We recommend that anyone, trading securities should perform it with caution, past performances are not indicative of future performance and some of the securities presented herein should be seen speculatively with a high degree of risk and volatility.

All forms of investment trading including day trading in any market have a number of re-wards and also its risks. Trading is not suitable for all visitors of the site based on the information offering by our service. Intraday trading is a speculative and high risk strategy in trading and therefore only risk capital is used for trading and keen observations of the system for controlling loss is recommended.

All information offered at www.capitalliferesearch.com is copyright protected and copying or redistribution of information, reports and news is strictly prohibited. Our visitors do acknowledge that warranty that is offered in connection with services and products described herein is offered completely by the advertiser or supplier of that product and not by www.capitalliferesearch.com. We do not warrant that access to our site and relevant services would be error free or uninterrupted that defects gets corrected. We are not accountable for viruses, irregularities, damage to the computers that result from availing, accessing or downloading any information from our website.

You assume complete responsibility and risk for your use of the site and its related services. [Www.capitalifereasearch.com](http://www.capitalifereasearch.com) attempts to ensure the correctness, authenticity and integrity of the site, it does not guarantee them. Price and availability of services that are offered by the site are subject to change without prior notice. Transactions between clients and the website is governed and constructed in accordance to the laws of India. We do not share customer information with anybody, to learn more read our privacy policy.

www.capitalifereasearch.com

Phone : +91 9301113999