

CAPITALLIFE MARKET RESEARCH PVT LTD



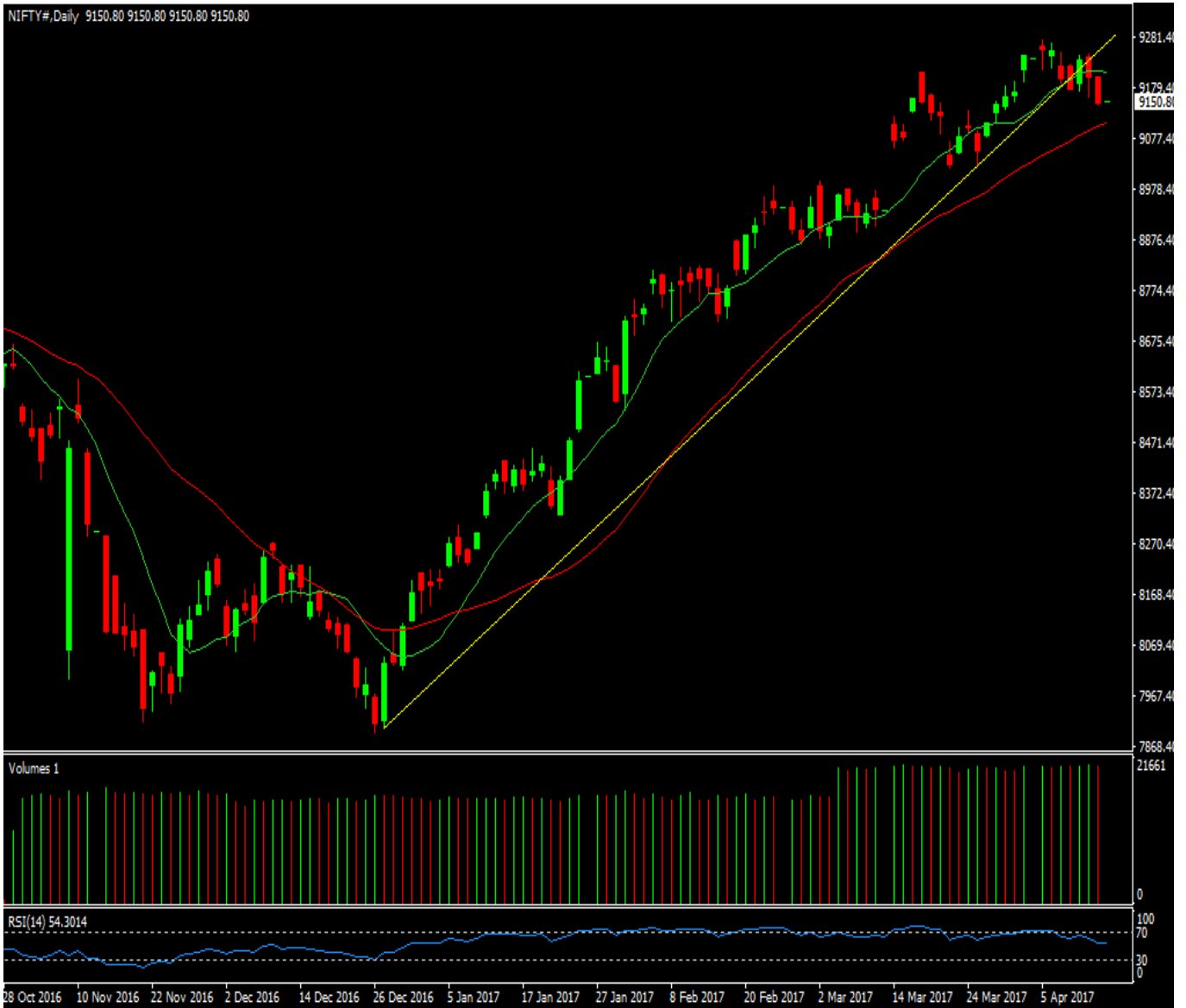
(WEEKLY EQUITY REPORT)

(17/04/2017 TO 21/04/2017)

RESEARCH BY- BHUPENDRA RAGHUVANSI (RESEARCH HEAD)

ANIKET SRIVASTAVA (RESEACH ANALYST)

NIFTY WEEKLY OVERVIEW

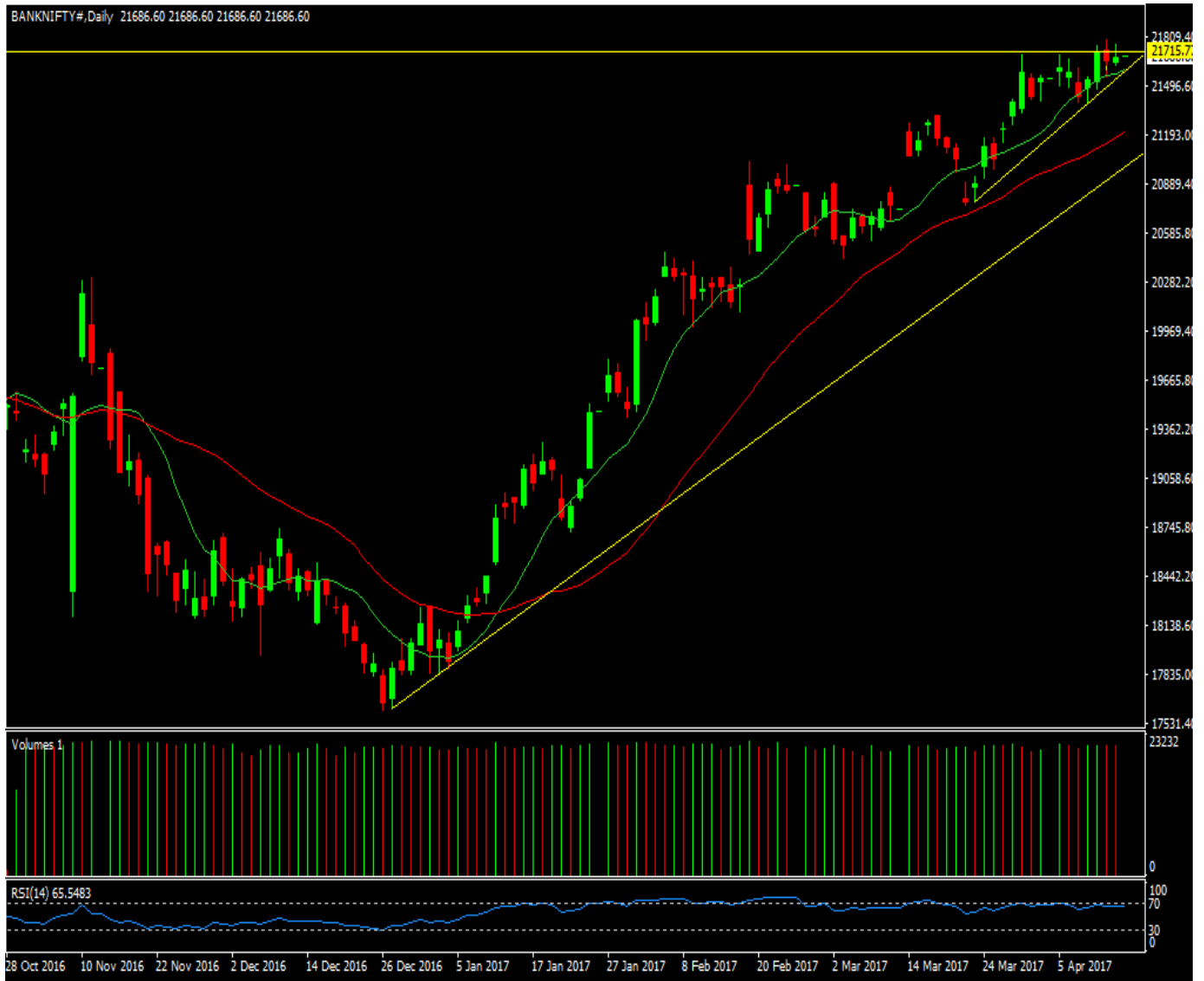


***NIFTY MAY TREND B/W 9650- 8650 THIS WEEK.**

*** MAJOR SUPPORT LEVEL IS 8050 IF IT'S BREAK NIFTY WILL LIKLY GOES NEGATIVE.**

***MAJOR RESISTANCE LEVEL IS 9325 IF IT'S BREAK NIFTY LIKLY TO GOES POSITIVE.**

BANKNIFTY WEEKLY OVERVIEW



***BANK NIFTY TREND B/W 20700- 22700 THIS WEEK.**

***MAJOR SUPPORT LEVEL IS 21300 IF IT'S BREAKNIFTY WILL LIKLY GOES NEGATIVE.**

*** MAJOR RESISTANCE LEVEL IS 22050 IF IT'S BREAK BANKNIFTY WILL LIKE GOES POSITIVE.**

STOCK PICK OF WEEK

***BUY ADLABS ABOVE 90 (TARGET 1- 100) (TARGET 2- 110)
(TARGET 3- 120) (SL- 80)**



***BUY ENGINEERSINDIA ABOVE 160 (TARGET 1- 180) (TARGET 2- 200) (TARGET 3- 220) (SL – 140)**



All sales recommendations and tips offered by capital life research are for the information of our investors only and are strictly not individual recommendations or offers to buy or sell securities. The information we offer are obtained from reliable sources, but is not guaranteed for completeness or accuracy. All users shall be responsible for the risks of their investment activities and in no event does capital life research, its owners, employees or investors be liable for monetary damages or losses that results from the actions taken after reading those reports, analysis and reviews published at www.capitalliferesearch.com. We recommend that anyone, trading securities should perform it with caution, past performances are not indicative of future performance and some of the securities presented herein should be seen speculatively with a high degree of risk and volatility.

All forms of investment trading including day trading in any market have a number of rewards and also its risks. Trading is not suitable for all visitors of the site based on the information offering by our service. Intraday trading is a speculative and high risk strategy in trading and therefore only risk capital is used for trading and keen observations of the system for controlling loss is recommended.

All information offered at www.capitalliferesearch.com is copyright protected and copying or redistribution of information, reports and news is strictly prohibited. Our visitors do acknowledge that warranty that is offered in connection with services and products described herein is offered completely by the advertiser or supplier of that product and not by www.capitalliferesearch.com. We do not warrant that access to our site and relevant services would be error free or uninterrupted that defects gets corrected. We are not accountable for viruses, irregularities, damage to the computers that result from availing, accessing or downloading any information from our website.

You assume complete responsibility and risk for your use of the site and its related services. www.capitalliferesearch.com attempts to ensure the correctness, authenticity and integrity of the site, it does not guarantee them. Price and availability of services that are offered by the site are subject to change without prior notice. Transactions between clients and the website is governed and constructed in accordance to the laws of India. We do not share customer information with anybody, to learn more read our privacy policy.

www.capitalliferesearch.com

Phone : +91 9301113999